



Approved Product

# PANGEA

---

## EQUIPMENTS



PRODUCT CATALOGUE



# Our Products are a Perfect Blend of Style and Usability.

## ABOUT US

Pangea Equipment is a registered trade mark of Bee Gee Enterprises, Jalandhar, India. We are manufacturing and supplying a multitude of beverage equipment. Manufactured in conformation with client requirements and industry standard, our products are a perfect blend of style and usability. We offer TOWERS, FAUCET, PARTY PUMP, COUPLER, DRIP TRAY and more such beverage equipment. These products are widely admired for their perfect finish high durability standards, optimum performance, application-specific design, superior quality and easy installation.

## Infrastructure

We have constructed a world class infrastructure facility at Bee Gee Enterprises. The various departments are manned by qualified, proficient and experienced workers. These workers handle all the operations in a skillful manner under the supervision of department heads. Every department is equipped with the necessary machines that help us in maximizing outputs. The cutting edge technologies installed at the manufacturing unit help us in maintaining consistent quality of our products. In addition, all the products are kept under control conditions at our warehouse.

The infrastructure is segregated into the following units:

- Manufacturing unit
- Quality control unit
- Warehouse and packaging unit
- Research and development unit
- Sales and marketing unit

## Our Team

We are fortunate enough to have been blessed with a team of dexterous and experienced workforce. The expertise and rich domain knowledge of our professionals has helped us to sustain our position in the competitive marketplace. The team works in coordination with each other to ensure that the tasks are done without any misinterpretations/misunderstandings. The sheer commitment and passion they display in every task undertaken, results in profitability for the company.

**INDEX**

<b>Draft Beer Tower</b>	<b>3</b>
<b>Draft Beer Tower Accessories</b>	<b>10</b>
<b>Beer Faucet</b>	<b>11</b>
<b>Beer Faucet Accessories</b>	<b>13</b>
<b>Shank Assembly</b>	<b>14</b>
<b>Keg Coupler</b>	<b>17</b>
<b>Party Dispensing Products</b>	<b>19</b>
<b>Glass Rinsers</b>	<b>21</b>
<b>Drip Tray</b>	<b>22</b>
<b>Jockey Box &amp; S.S304 Coils</b>	<b>23</b>
<b>Gas Distributor</b>	<b>24</b>
<b>Beer Line Fitting &amp; Accessories</b>	<b>26</b>
<b>Tap Handles</b>	<b>28</b>
<b>Coffee Equipment</b>	<b>29</b>

## Draft Beer Tower

### 3" Stainless Steel Draft Beer Tower



**A401**

Single Faucet Draft Beer Tower  
Height : 12"



**A402**

Double Faucet Draft Beer Tower  
Height : 12"



**A403**

Triple Faucet draft Beer Tower  
Height : 14"

**Tower Features:**

Polished Stainless Steel 304 tower will not pit or Chip Like Chrome  
3 MM Thick Stainless Steel 304 Base, for sturdy grip

**Beer tower come with :**

- 1) Pre-assembled 5' long NSF and FDA approved beer hose, which is unharmed by cleaning chemicals, fitted with 3/16" chrome plated brass tail piece, Chrome plated Brass Hex nut and Neoprene washer to connect with keg coupler.
- 2) Premium Quality Chrome plated Forged brass body faucet, with solid extruded brass rod lever, chrome plated Shaft, Collar Nut and included. plastic handle for easy operations.
- 3) Premium quality chrome plated extruded brass rod shank, coupling nut, flange, Solder welded S.S 304 elbow and brass hex nut.
- 4) Mounting Gasket and Mounting hardware.

### 3" Polished Brass Draft Beer Tower



**A404**

Single Faucet Draft Beer Tower  
Height : 12"



**A405**

Double Faucet Draft Beer Tower  
Height : 12"



**A406**

Triple Faucet draft Beer Tower  
Height : 14"

**Tower Features:**

Polished Brass with Lacquer Coating, to protect it from scratched and Tarnish

**Beer tower come with :**

- 1) Pre-assembled 5' long NSF and FDA approved beer hose, which is unharmed by cleaning chemicals, fitted with 3/16" chrome plated brass tail piece, Chrome plated Brass Hex nut and Neoprene washer to connect with keg coupler.
- 2) Premium Quality Lacquered and Polished Forged brass body faucet, with solid extruded brass rod lever, Lacquered and Polished Shaft, Collar Nut and included plastic handle for easy operations.
- 3) Premium quality polished extruded brass rod shank, coupling nut, flange, Solder welded S.S 304 elbow and brass hex nut.
- 4) Mounting Gasket and Mounting hardware.

## 3" Round Taper Cut Tower



**A419**

Single Faucet Draft Beer Tower  
Height : 16"

**Tower Features:**

Polished Stainless Steel tower will not pit or Chip Like Chrome  
Taper back from brand name Display  
3 MM Thick Stainless Steel 304 Base, for sturdy grip

**Beer tower come with :**

- 1) Pre-assembled 5' long NSF and FDA approved beer hose, which is unharmed by cleaning chemicals, fitted with 3/16" chrome plated brass tail piece, Chrome plated Brass Hex nut and Neoprene washer to connect with keg coupler.
- 2) Premium Quality Chrome plated Forged brass body faucet, with solid extruded brass rod lever, chrome plated Shaft, Collar Nut and included plastic handle for easy operations.
- 3) Premium quality chrome plated extruded brass rod shank, coupling nut, flange, Solder welded S.S 304 elbow and brass hex nut.
- 4) Mounting Gasket and Mounting hardware.

## 3" Powder Coated Draft Beer Tower



**A407**

Single Faucet Draft Beer Tower  
Height : 12"



**A408**

Double Faucet Draft Beer Tower  
Height : 12"



**A409**

Triple Faucet draft Beer Tower  
Height : 14"

**Tower Features:**

Polished Stainless Steel tower will not pit or Chip Like Chrome  
3 MM Thick Stainless Steel 304 Base, for sturdy grip

**Beer tower come with :**

- 1) Pre-assembled 5' long NSF and FDA approved beer hose, which is unharmed by cleaning chemicals, fitted with 3/16" chrome plated brass tail piece, Chrome plated Brass Hex nut and Neoprene washer to connect with keg coupler with each faucet.
- 2) Premium Quality Chrome plated Forged brass body faucet, with solid extruded brass rod lever, chrome plated Shaft, Collar Nut and included plastic handle for easy operations.
- 3) Premium quality chrome plated extruded brass rod shank, coupling nut, flange, Solder welded S.S 304 elbow and brass hex nut.
- 4) Mounting Gasket and Mounting hardware

## 100% S.S contact 3" Stainless Steel Draft Beer Tower



**A427**

Single Faucet Draft Beer Tower  
Height : 12"



**A428**

Double Faucet Draft Beer Tower  
Height : 12"



**A429**

Triple Faucet draft Beer Tower  
Height : 14"

### Tower Features:

Polished Stainless Steel 304 tower will not pit or Chip Like Chrome  
3 MM Thick Stainless Steel 304 Base, for sturdy grip

### Beer tower come with :

- 1) Pre-assembled 5' long NSF and FDA approved beer hose, which is unharmed by cleaning chemicals, fitted with 3/16" Stainless Steel 304 tail piece, Chrome plated Brass Hex nut and Neoprene washer to connect with keg coupler
- 2) Premium Quality polished Stainless Steel 304 body faucet, with solid extruded S.S304 rod lever, S.S304 Shaft, Chrome plated brass Collar Nut, Bonnet and included plastic handle for easy operations.
- 3) Premium quality polished Stainless Steel 304 Shank, Chrome plated brass coupling nut, flange, Tig welded S.S 304 elbow and brass hex nut.
- 4) Mounting Gasket and Mounting hardware.

## 2.5" S.S304 Draft Beer Tower



**A434**

Single Faucet Draft Beer Tower  
Height : 10.5"

### Tower Features:

Polished Stainless Steel 304 tower will not pit or Chip Like Chrome  
Forged brass base with Chrome plated finish

### Beer tower come with :

- 1) Pre-assembled 5' long NSF and FDA approved beer hose, which is unharmed by cleaning chemicals, fitted with 3/16" chrome plated brass tail piece, Chrome plated Brass Hex nut and Neoprene washer to connect with keg coupler with each faucet.
- 2) Premium Quality Chrome plated Forged brass body faucet, with solid extruded brass rod lever, chrome plated Shaft, Collar Nut and included plastic handle for easy operations.
- 3) Premium quality chrome plated extruded brass rod shank, coupling nut, flange, Solder welded S.S 304 elbow and brass hex nut.
- 4) Mounting Gasket and Mounting hardware.

## 3" Industrial Draft Beer Tower



**A421**

Single Faucet Draft Beer Tower  
Height : 13.5"



**A422**

Double Faucet T-Type Draft Beer Tower  
Height : 14.5"

### Tower Features:

Rustic Looking Black iron towers, made from high quality s.s.304 industrial pipe and fitting with powder coating black finish  
3 MM Thick black iron base, for sturdy grip  
Black powder coating to save from tarnish

### Beer tower come with :

- 1) Pre-assembled 5' long NSF and FDA approved beer hose, which is unharmed by cleaning chemicals, fitted with 3/16" Stainless Steel 304 tail piece, Chrome plated Brass Hex nut and Neoprene washer to connect with keg coupler.
- 2) Premium Quality polished Stainless Steel 304 body faucet, with solid extruded S.S304 rod lever, S.S304 Shaft, Chrome plated brass Collar Nut, Bonnet and included plastic handle for easy operations.
- 3) Premium quality polished Stainless Steel 304 Shank, Chrome plated brass coupling nut, flange, Tig welded S.S 304 elbow and brass hex nut.
- 4) Mounting Gasket and Mounting hardware.

\*Available with forged brass faucets as well

## T-Type Square Tower



**A410**

Triple Faucet Beer Tower  
Height : 14 1/2"



**A411**

Four Faucet Beer Tower  
Height : 14 1/2"

### Tower Features:

Polished Stainless Steel tower will not pit or Chip Like Chrome  
3 MM Thick Stainless Steel 304 Base, for sturdy grip

### Beer tower come with :

- 1) Pre-assembled 5' long NSF and FDA approved beer hose, which is unharmed by cleaning chemicals, fitted with 3/16" chrome plated brass tail piece, Chrome plated Brass Hex nut and Neoprene washer to connect with keg coupler with each faucet.
- 2) Premium Quality Chrome plated Forged brass body faucet, with solid extruded brass rod lever, chrome plated Shaft, Collar Nut and included plastic handle for easy operations.
- 3) Premium quality chrome plated extruded brass rod shank, coupling nut, flange, Solder welded S.S 304 elbow and brass hex nut.
- 4) Mounting Gasket and Mounting hardware.

## Chrome Plated Brass Cobra Beer Tower



**A413**

Single Faucet Draft Beer Tower  
Height : 13"



**A414**

Double Faucet Draft Beer Tower  
Height : 13"



**A435**

Triple Faucet draft Beer Tower  
Height : 13"

**Tower Features:**

Cobra shaped die cast brass body with sturdy construction  
Threaded base pipe for easy mounting on the table

**Beer tower come with :**

- 1) Pre-assembled 5' long NSF and FDA approved beer hose, which is unharmed by cleaning chemicals, fitted with 3/16" chrome plated brass tail piece, Chrome plated Brass Hex nut and Neoprene washer to connect with keg coupler with each faucet.
- 2) Premium Quality Chrome plated Forged brass body faucet, with solid extruded brass rod lever, chrome plated Shaft, Collar Nut and included plastic handle for easy operations.
- 3) Premium quality chrome plated extruded brass rod shank, coupling nut, flange, Solder welded S.S 304 elbow and brass hex nut

## Polished Brass Cobra Beer Tower



**A415**

Single Faucet Draft Beer Tower  
Height : 13"



**A416**

Double Faucet Draft Beer Tower  
Height : 13"



**A437**

Triple Faucet draft Beer Tower  
Height : 13"

**Tower Features:**

Cobra shaped die cast brass body with sturdy construction  
Threaded base pipe for easy mounting on the table

**Beer tower come with :**

- 1) Pre-assembled 5' long NSF and FDA approved beer hose, which is unharmed by cleaning chemicals, fitted with 3/16" chrome plated brass tail piece, Chrome plated Brass Hex nut and Neoprene washer to connect with keg coupler with each faucet.
- 2) Premium Quality Chrome plated Forged brass body faucet, with solid extruded brass rod lever, chrome plated Shaft, Collar Nut and included plastic handle for easy operations.
- 3) Premium quality chrome plated extruded brass rod shank, coupling nut, flange, Solder welded S.S 304 elbow and brass hex nut



## Axis Beer Tower



**A431**

Chrome plated Brass Finish Single Faucet Beer Tower  
Height : 11"



**A432**

Polished Brass Finish Single Faucet Beer Tower  
Height : 11"

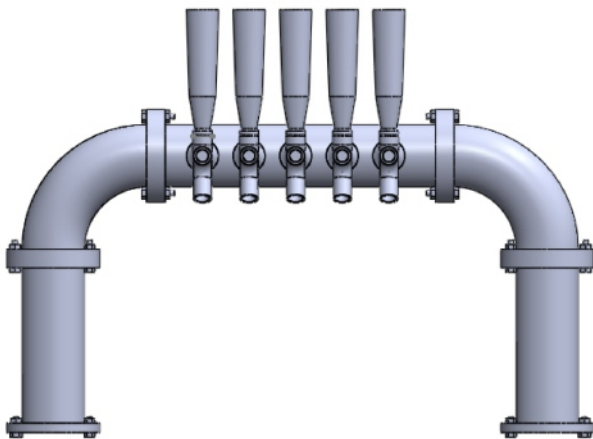
### Tower Features:

Made of high quality durable chrome plated brass  
Slim, sleek and stylish design

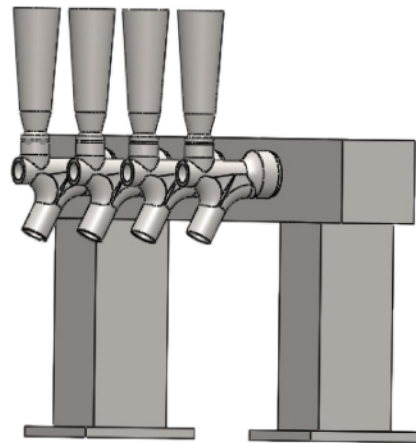
### Beer tower come with :

- 1) Pre-assembled 5' long NSF and FDA approved beer hose, which is unharmed by cleaning chemicals, fitted with 3/16" chrome plated brass tail piece, Chrome plated Brass Hex nut and Neoprene washer to connect with keg coupler
- 2) Premium Quality Lacquered and Polished Forged brass body faucet, with solid extruded brass rod lever, Lacquered and Polished Shaft, Collar Nut and included plastic handle for easy operations.
- 3) Premium quality chrome plated extruded brass rod shank, coupling nut, flange and brass hex nut.

## Custom Draft Beer Towers



Bridge type Draft beer tower



Double Pillar Draft beer tower

\*Available with option of forged brass beer faucet or S.S. 304 beer faucet.

\*Available as air cooled or Glycol Cooled with S.S.304 pipe and copper pipe with insulation.

## Draft Beer Tower Accessories

### 3" Tower Extension



**A481**

3" Tower Extension with Single Hole



**A482**

3" Tower Extension with Double Hole

**Tower Features:**

Polished Stainless Steel will not pit or Chip Like Chrome

**Beer tower come with :**

- 1) Premium quality chrome plated extruded brass rod shank, coupling nut, flange, Solder welded S.S 304 elbow and brass hex nut
- 2) Mounting hardware

### 4.75" Tower Extension Double Hole



**A483**

3" Tower Extension with Double Hole

**Tower Features:**

Polished Stainless Steel will not pit or Chip Like Chrome

**Beer tower come with :**

- 1) Premium quality chrome plated extruded brass rod shank, coupling nut, flange, Solder welded S.S 304 elbow and brass hex nut
- 2) Mounting hardware

### Tower Clamp



**A484**

C Type Clamp

**Features:**

- C-Clamp for Easy mounting on Table
- Solid 1.5 MM Stainless Steel construction for long Life Matt Finish
- Removable Drip tray for easy cleaning
- \*Beer tower not included



**A485**

Square Draft Beer Tower With Inbuilt Clamp

**Features:**

- No need to buy extra tower, single piece tower with clamp, perfect for outdoor events
- C-Clamp for Easy mounting on Table
- Solid 1.5 MM Stainless Steel construction for long Life Matt Finish
- Removable Drip tray for easy cleaning



**A486**  
Mini Keg 2lt

**Features:**

Small Stainless Steel beer jugs are specifically designed for home brewing and growler dispensing

Easy to open Screw top

Made of food grade stainless steel material, sturdy, durable and rustproof, keeps carbonization pressure for a longer period, keeps the freshness of beer.

Size of Keg : 13.5 X 17.5 CM



**A487**  
Mini Keg 5lt with D-system Spear

Small Stainless Steel beer kegs are specifically designed for home brewing and growler dispensingKeg comes installed with D-System Spear which helps to maintain pressure and any D-System Keg coupler can be used for Kegging

Made of food grade stainless steel material, sturdy, durable and rustproof, keeps carbonization pressure for a longer period of time, keeps the freshness of beer.

Comes with D-System spear opening tool

Size of Keg : 17.5 X 26.2 CM

## Beer Faucet

### Standard US Beer Faucet



NSF

**A006**

Chrome plated Forged Brass  
Faucet Lever Material: Brass



NSF

**A009**

Lacquered Polished Forged Brass  
Faucet Lever Material: Brass



NSF

**A013**

100% Stainless Steel Draft Beer Faucet  
Lever Material: Stainless Steel 303  
Shaft: Stainless Steel 303

**Specification**

Thread: 1-1/8" - 18 UNEF (Standard US Industry Thread)

Lever Thread: 3/8"-16 UNC

Shaft, Bonnet and Collar Nut: Chrome plated Brass

### Self Closing Draft Beer Faucet



NSF

**A007**

Chrome plated Forged Brass Self Closing Draft Beer Faucet  
Lever Material: Brass  
Shaft: Brass



NSF

**A014**

Stainless Steel 304 Self Closing Draft Beer Faucet  
Lever Material: Stainless Steel 303  
Shaft: Stainless Steel 303

**Specification:**

Spring Back Design Automatically closes the faucet on releasing the handle

Thread: 1-1/8" - 18 UNEF (Standard US Industry Thread)

Lever Thread: 3/8"-16 UNC

Bonnet and Collar Nut: Chrome plated Brass

## European Beer Faucet With Flow Control



**A018**  
 Chrome Plated  
 Forged Brass Faucet  
 Lever Material: Brass



**A020**  
 Lacquered Polished  
 Forged Brass Faucet  
 Lever Material: Brass



**A019**  
 100% Stainless Steel  
 Draft Beer Faucet  
 Lever Material: Stainless Steel 303  
 Shaft: Stainless Steel 303

**Specification :**

Traditional European Style Faucet  
 Adjustable flow control Spout  
 Spring Loaded Self closing faucet  
 Thread: 1-1/8" - 18 UNEF (Standard US Industry Thread)  
 Lever Thread: 3/8"-16 UNC  
 Shaft, Bonnet and Collar Nut: Chrome plated Brass

## Stout Faucet



**A041**  
 Chrome Plated Forged Brass  
 Stout Faucet  
 Lever Material: Brass



**A042**  
 Lacquered Polished Forged Brass  
 Stout Faucet  
 Lever Material: Brass

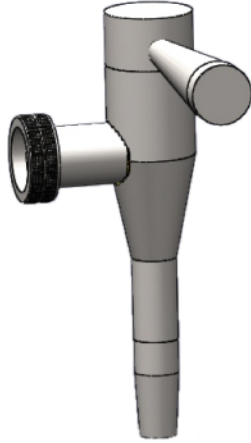


**A043**  
 100% Stainless Steel Draft Beer  
 Stout Faucet  
 Lever Material: Stainless Steel 303  
 Shaft: Stainless Steel 303

**Specification :**

Best in class for pouring stout and ale  
 Pull forward to pour and push backward for creamy finish  
 Thread: 1-1/8" - 18 UNEF (Standard US Industry Thread)  
 Lever Thread: 3/8"-16 UNC  
 Piston: Stainless Steel 303  
 Restrictor Disc: S.S 304 with .5 MM holes  
 Spout: Stainless Steel 304

## Wine Faucet



**A031**  
S.S 316 Wine Faucet

**Specification :**

Best in class for pouring wine

Adjust the flow of wine by operating the ball valve

Body : Polished stainless steel 304

Thread: 1-1/8" - 18 UNEF (Standard US Industry Thread)

Lever Material: Chrome plated brass

Ball: Stainless Steel 303

Spout: Stainless Steel 304

## Beer Faucet Accessories

### Standard US Beer Faucet Spout Extension

Just slide the extension inside the spout, for better foam free beer

Material : Chrome Plated Extruded Brass Rod



A081

### Stainless Steel 303 Standard Us Beer Faucet Spout Extension

Just slide the extension inside the spout, for better foam free beer

Material : Stainless Steel 303



A082

### Growler Filler

Just slide the extension inside the spout

1.5' of NSF and FDA Approved fitted with the filler

Material : Chrome Plated Extruded Brass Rod



A083

### Faucet spout Plug



A084

### Chrome Plated Brass Adapter

To Connect. Faucet & Quick Disconnect Faucet Coupling Nut

Material : Chrome Plated Extruded Brass Rod



A085

## Shank Assembly

### Stainless Steel Shank



#### Stainless Steel Standard Shank with 1/4" Bore

A) 2-1/8"	A151
B) 3-1/8"	A152
C) 4-1/8"	A153
D) 5-1/8"	A154
E) 6-1/8"	A155

#### Stainless Steel Standard Shank with 3/16" Bore

A) 2-1/8"	A161
B) 3-1/8"	A162
C) 4-1/8"	A163
D) 5-1/8"	A164
E) 6-1/8"	A165

#### Specification :

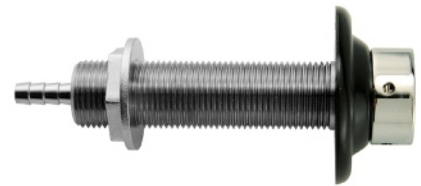
Material : Stainless Steel 303 shank , (only Stainless Steel touches the product)

Excellent for beer, wine, cider and coffee

Thread : 7/8" - 14 (5/8" BSP)

Includes : Chrome plated brass Coupling nut, Wall mount plastic flange and brass check nut

### Stainless Steel Standard Shank With Nipple



#### Stainless Steel standard Shank with 1/4" Bore with Nipple

A) 2-3/4"	A171
B) 3-1/2"	A172
C) 4-1/2"	A173
D) 5-1/2"	A174

#### Stainless Steel standard Shank with 3/16" Bore with Nipple

A) 2-3/4"	A181
B) 3-1/2"	A182
C) 4-1/2"	A183
D) 5-1/2"	A184

#### Specification :

Built in hose nipple, no extra fitting required

Material : Stainless Steel 303 shank , (only Stainless Steel touches the product)

Excellent for beer, wine, cider and coffee

Thread: 7/8" - 14 (5/8" BSP)

Includes: Chrome plated brass Coupling nut, Wall mount plastic flange and brass check nut

## Chrome Plated Brass Standard Shank



### Chrome Plated Brass Standard Shank with 1/4" Bore

A) 2-1/8"	A101
B) 3-1/8"	A102
C) 4-1/8"	A103
D) 5-1/8"	A104
E) 6-1/8"	A105
F) 8-1/8"	A106

### Chrome plated Brass standard Shank with 3/16" Bore

A) 2-1/8"	A111
B) 3-1/8"	A112
C) 4-1/8"	A113
D) 5-1/8"	A114
E) 6-1/8"	A115
F) 8-1/8"	A116

#### Specification :

Material : Chrome plated extruded brass shank

Thread : 7/8" - 14 (5/8" BSP)

Includes : Chrome plated brass coupling nut, wall mount plastic flange and brass check nut

## Chrome Plated Brass Standard Shank With Nipple



### Chrome Plated Brass standard Shank with 1/4" Bore with Nipple

A) 2-3/4"	A121
B) 3-1/2"	A122
C) 4-1/2"	A123
D) 5-1/2"	A124
E) 6-1/2"	A125

### Chrome Plated Brass standard Shank with 3/16" Bore with Nipple

A) 2-3/4"	A131
B) 3-1/2"	A132
C) 4-1/2"	A133
D) 5-1/2"	A134
E) 6-1/2"	A135

#### Specification :

Built in hose nippler, no extra fitting required

Material : Chrome plated extruded brass shank

Thread : 7/8" - 14 (5/8" BSP)

Includes : Chrome plated brass coupling nut, wall mount plastic flange and brass check nut



## Standard Elbow Shank Assembly



**A141**  
**Chrome Plated Brass**  
**Standard Elbow Shank Assembly**



**A142**  
**Polished Brass**  
**Standard Elbow Shank Assembly**



**A143**  
**Polished Stainless Steel 303/304**  
**Standard Elbow Shank Assembly**

**Specification :**

Length: 1-7/8"

Bore I.D: 3/16"

Thread: 7/8"-14 (5/8" BSP)

S.S 304 Elbow welded in the Shank

Includes: Chrome plated brass Coupling nut, Chrome outside flange, Inside Tower ABS Flange, Tower Shank nut

## Standard Elbow Shank Assembly With Self Closing Spring

(Convert any standard US faucet to self closing Faucet, with forward push taper spring)



**A144**  
**Chrome Plated Brass**  
**Standard Elbow Shank Assembly**



**A145**  
**Polished Stainless Steel 303/304**  
**Standard Elbow Shank Assembly**

**Specification :**

Length: 1-7/8"

Bore I.D: 3/16"

Thread: 7/8"-14 (5/8" BSP)

Taper Spring : S.S. 304

S.S 304 Elbow welded in the Shank

Includes: Chrome plated brass Coupling nut, Chrome outside flange, Inside Tower ABS Flange, Tower Shank nut

## Keg Coupler

"The KEG Coupler connects to the Keg Valve in the Keg,  
Both lines of beer faucet and gas are attached to the coupler"

### D-System Keg Coupler



NSF

**A301**

S.S 304 Body  
with Nickle Plated  
Brass Probe



NSF

**A302**

S.S 304 Body  
with S.S 304  
Probe



NSF

**A303**

Forged Brass Body  
with Nickle Plated  
Brass Probe



NSF

**A304**

Forged Brass Body  
with S.S 304  
Probe



**A305**

Forged Brass Body  
without PRV with Nickle Plated  
Brass Probe

#### Specification :

Handle Color : Black/Red/Yellow/Green/blue

Handle Style : Pull Type lever

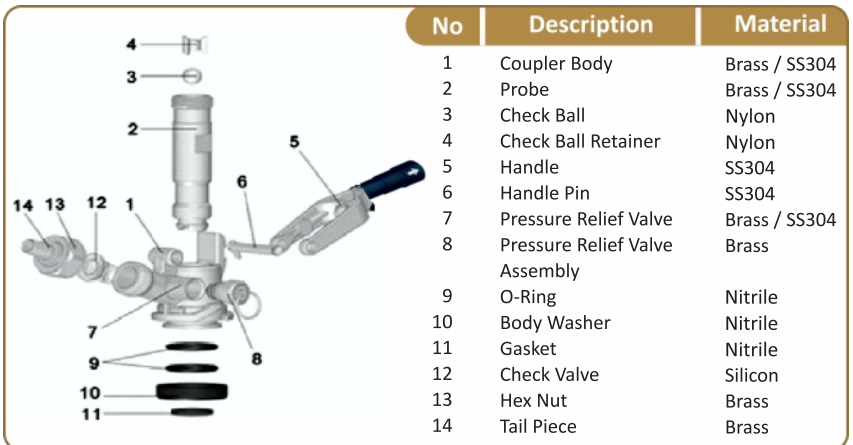
Handle Material : Stainless Steel 304

Gas Port : 3/8" O.D Barb (To fit 5/16" I.D Gas hose)

Beer Port : 7/18"- 14 (5/8" BSP) US beer standard

Safety : Pressure relief valve releases at 55-65 PS  
for all keg coupler except A305

Seals : Nitrile food grade seals



### S-System Keg Coupler



NSF

**A306**

S.S 304 Body  
with Nickle Plated  
Brass Probe



NSF

**A307**

S.S 304 Body  
with S.S 304  
Probe



NSF

**A308**

Forged Brass Body  
with Nickle Plated  
Brass Probe



NSF

**A309**

Forged Brass Body  
with S.S 304  
Probe



**A310**

Forged Brass Body  
without PRV with Nickle Plated  
Brass Probe

#### Specification :

Handle Color : Black/Red/Yellow/Green/blue

Handle Style : Pull Type lever

Handle Material : Stainless Steel 304

Gas Port : 3/8" O.D Barb (To fit 5/16" I.D Gas hose)

Beer Port : 7/18"- 14 (5/8" BSP) US beer standard

Safety : Pressure relief valve releases at 55-65 PSI for all keg coupler except A310

Seals : Nitrile food grade seals

## A-System Keg Coupler

Slide on Keg-Connection



**A311**

Handle Color : Black/Red/Yellow/Green/blue

Handle Style : Pull Type lever

Handle Material : Stainless Steel 304

Gas Port : 3/8" O.D Barb (To fit 5/16" I.D Gas hose)

Beer Port : 7/18"- 14 (5/8" BSP) US beer standard

Safety : Pressure relief valve releases at 55-65 PSI for all keg coupler except A310

Seals : Nitrile food grade seals with hardness upto 75, ensuring longlife

## U-System Keg Coupler



**A312**

Handle Style: Ergonomic Lever handle

Gas Port: 3/8" O.D Barb (To fit 5/16" I.D Gas hose)

Beer Port: 7/18"- 14 (5/8" BSP) US beer standard

Safety: Pressure relief valve releases at 55-65 PSI for all keg coupler except A310

Seals: Nitrile food grade seals with hardness upto 75, ensuring longlife

## Party Dispensing Products

### Picnic Coupler with 4" Picnic Pump

#### D-System



**A201**

S.S 304 Body  
with Nickle Plated  
Brass Probe



**A202**

Chrome Plated Forged Brass Body  
with Nickle Plated  
Brass Probe



**A203**

S.S 304 Body  
with Nickle Plated  
Brass Probe



**A204**

Chrome Plated Forged Brass Body  
with Nickle Plated  
Brass Probe

Pump Body: Brass

Pump Finish: Chrome plated

No plastic parts in pump

Pre-Assembled with 2' of NSF and FDA Approved black hose and Picnic faucet

#### S-System

### Picnic Coupler with 8" Picnic Pump

#### D-System



**A205**

S.S 304 Body  
with Nickle Plated  
Brass Probe



**A206**

Chrome Plated Forged Brass Body  
with Nickle Plated  
Brass Probe



**A207**

S.S 304 Body  
with Nickle Plated  
Brass Probe



**A208**

Chrome Plated Forged Brass Body  
with Nickle Plated  
Brass Probe

Pump Body: Brass

Pump Finish: Chrome plated

No plastic parts in pump

Pre-Assembled with 2' of NSF and FDA Approved black hose and Picnic faucet

#### S-System

## Picnic Pump



**A209**

4" Picnic Pump



**A210**

8" Picnic Pump

**Specification :**

Pump Body: Brass  
 Pump Finish: Chrome plated  
 No plastic parts in pump

## 12" Upright Tower



**A211**

Upright Tower

Shank: Chrome Plated Brass

**Specification :**

Connect with picnic pump and Keg coupler for outdoor events  
 Rod: Stainless Steel 304  
 Finish: Polished S.S. 304  
 Inner Tuber: Stainless Steel 304  
 Pre fitted with Coupling nut, Long Brass Hex nut and Neoprene washer  
 \*Beer faucet not included



**A212**

100% S.S. Upright Tower

Shank: S.S. 303

## 12" Upright Tower Converter Assembly



**A213**

Upright Tower Converter Assembly  
 with 4" Pump



**A214**

Upright Tower Converter Assembly  
 with 8" Pump

All metal parts for more durability and life Include faucet & knob Intended for converting a coupler (Keg faucet) into a supreme Keg party pump.

## Picnic Faucet



## Picnic Faucet with 2' of NSF & FDA approved hose



## Clamp Set-Restricted Rod



Clamp set for holding metal pump to upright rod  
 Material : Stainless Steel 304

## Pump Connector with Hose Barb

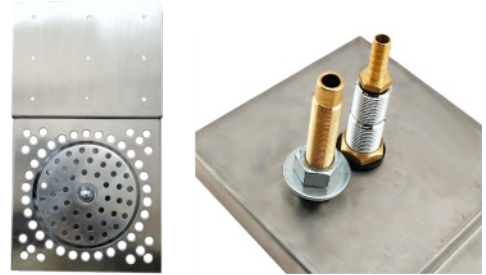


Connects any picnic pump to CO2 inlet side of coupler Use short length of 5/16" vinyl hose

## Glass Rinsers

### Under Counter Glass Rinser

Rinse away any impurities before pouring beer  
 Chill your glass by rinsing you glass with cold water  
 Wetted glass pour better than dry glass  
 Overall Size : 11-3/8" L X 6-3/8" W  
 Glass Rinser Area : 6-3/8" L X 6-3/8" W  
 Mount Area : 5" L X 6-3/8" W  
 Type : With Drain  
 Finish : Brushed  
 Material : SS 304



A550

### Surface Mount Glass Rinser

Rinse away any impurities before pouring beer  
 Chill your glass by rinsing you glass with cold water  
 Wetted glass pour better than dry glass  
 Overall Size : 11-3/8" L X 6-3/8" W  
 Glass Rinser Area : 6-3/8" L X 6-3/8" W  
 Mount Area : 5" L X 6-3/8" W  
 Type : With Drain  
 Finish : Brushed  
 Material : SS 304



A551

### Glass Rinser Assembly Single Sprayer

The portable cup washing machine rinser is an efficient way to clean all cups and vessels. It allows you to clean the milk deposits and coffee stain. The water will spray into the vessels and get them clean. Perfect washing performance with cold water!  
 The pitcher rinsers won't break the glass and could clean the lipstick and other besmirch easily and clearly!  
 The rinser shut's down once you take off the vessels.  
 Water saving more than 70%! Energy saving and environmental!  
 Suitable for many types and sizes of glass/cup! Great washing tool for most restaurants, coffee shops and cafes.  
 Compact and light, you could put it anywhere! Easy to save and reuse.

**Specifications:**

Washing method :High pressure washing  
 Cleaning speed : 800pcs / h  
 Mounting hole size: 22mmWings are covered with PVC tube, acting as cushions for glass



A552

### Glass Rinser Assembly Multiple Sprayer

The portable cup washing machine rinser is an efficient way to clean all cups and vessels. It allows you to clean the milk deposits and coffee stain. The water will spray into the vessels and get them clean. Perfect washing performance with cold water!  
 The pitcher rinsers won't break the glass and could clean the lipstick and other besmirch easily and clearly! The rinser shut's down once you take off the vessels.  
 Water saving more than 70%! Energy saving and environmental!  
 Suitable for many types and sizes of glass/cup! Great washing tool for most restaurants, coffee shops and cafes.  
 Compact and light, you could put it anywhere! Easy to save and reuse.

**Specifications:**

Washing method :High pressure washing Cleaning speed :800pcs / h  
 Mounting hole size: 22mm



A553

## Drip Tray

### Wall Mount Drip Tray

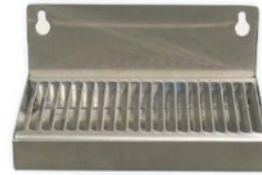


Without Drain

A)	4" X 6"	A501
B)	5" X 6"	A502
C)	6" X 6"	A503
D)	8" X 6"	A504
E)	10" X 6"	A505

**Specification :**

Grade SS 304- Solid 1.2mm  
Construction  
Stainless Steel Grid



With Drain

A)	4" X 6"	A506
B)	5" X 6"	A507
C)	6" X 6"	A508
D)	8" X 6"	A509
E)	10" X 6"	A510

**Specification :**

Grade SS 304- Solid 1.2mm Construction  
Stainless Steel Grid  
Comes Pre-fitted with S.S 304 threaded socket, welded in the center  
Includes Drain Assembly



### Surface Mount Drip Tray



Without Drain

A)	10" X 5"	A511
B)	12" X 5"	A512
C)	14" X 5"	A513
D)	16" X 5"	A514
E)	18" X 5"	A515
F)	20" X 5"	A516
G)	22" X 5"	A517

**Specification :**

Grade SS 304- Solid 1.2mm Construction  
Stainless Steel Grid



With Drain

A)	10" X 5"	A518
B)	12" X 5"	A519
C)	14" X 5"	A520
D)	16" X 5"	A521
E)	18" X 5"	A522
F)	20" X 5"	A523
G)	22" X 5"	A524

**Specification :**

Grade SS 304- Solid 1.2mm Construction  
Stainless Steel Grid  
Comes Pre-fitted with S.S 304 threaded socket, welded in the center  
Includes Drain Assembly



### Surface Mount 3" Coloumn Cut Out Drip Tray



Without Drain

12" x 6"	Punched Hole Grid	A525
----------	-------------------	------

**Specification :**

Grade SS 304- Solid 1.2mm Construction  
Stainless Steel Grid



With Drain

12" x 6"	Punched Hole Grid	A526
----------	-------------------	------

**Specification :**

Grade SS 304- Solid 1.2mm Construction  
Stainless Steel Grid  
Comes Pre-fitted with S.S. 304 threaded socket, welded in the center  
Includes Drain Assembly



## Jockey Box & S.S304 Coils

### Jockey Box Coil Cooler



**A701**  
**Single Faucet**

**Specification :**  
50 Feet X 5/16" OD Stainless Steel 304 Coil  
24 Quarts – Hold More Ice  
Premium Faucet And Knob Included  
Insulated Ice Box  
Great for event dispensing  
Includes Hose assembly for connection to coupler



**A702**  
**Double Faucet**

### SS 304 Cooling Coil



**A703**  
**50' x 5/16" OD**  
Material : SS 304

**Specification :**  
Coil height : 6.75"  
Coil OD : 5.25"  
With Beer Nut and Ferrules



**A704**  
**(Left Hand)-90' x 3/8" OD**  
Material : SS 304

**Specification :**  
Dimensions : 70' x 3/8" & 20' x 1/4" O.D  
Diameter : 9-1/2"  
Height : 8"



**A705**  
**(Left Hand) 120' x 3/8" OD**  
Material : SS 304

**Specification :**  
Dimensions : 100' x 3/8" & 20' x 1/4" O.D.  
Diameter : 9-1/2"  
Height : 10"

\*Includes Grommets, Ferrules and Hex nut fittings for easy connection to shanks.

### Standard Wort Chiller



**A706**  
**Copper Wort Chiller with Garden Hose Fittings**  
Material : Copper  
3/8" OD x 25' Long Copper Coil



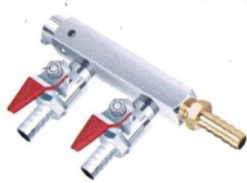
**A707**  
**S.S. 304 Wort Chiller with Garden Hose Fittings**  
Material : S.S. 304  
3/8" OD x 25' Long SS Coil

Includes 7 feet clear hose  
Brass Garden hose connection nut on other end



## Gas Distributor

### 2 Way Gas Distributor



**with 60 PSI PRV**

Manifold Material: Brass  
 Mounting Bracket: Separate  
 Inlet Connection: 3/8" O.D. (To fit 5/16" I.D. Gas Hose) **A601**  
 Outlet Connections: 3/8" O.D. (To fit 5/16" I.D. Gas Hose) **A602**  
 Inlet Connection: 1/4" O.D. (To fit 3/16" I.D. Gas Hose)  
 Outlet Connections: 1/4" O.D. (To fit 3/16" I.D. Gas Hose)



**2 Way Gas Distributor without PRV**

Manifold Material : Brass  
 Mounting Bracket : Separate  
 Inlet Connection : 3/8" O.D. (To fit 5/16" I.D. Gas Hose) **A607**  
 Outlet Connections : 3/8" O.D. (To fit 5/16" I.D. Gas Hose)  
 Inlet connection : 1/4" O.D. (To fit 3/16" I.D. Gas Hose) **A608**  
 Outlet connections : 1/4" O.D. (To fit 3/16" I.D. Gas Hose)

### 3 Way Gas Distributor



**with 60 PSI PRV**

Manifold Material : Brass  
 Mounting Bracket : Separate  
 Inlet Connection : 3/8" O.D. (To fit 5/16" I.D. Gas Hose) **A603**  
 Outlet Connections : 3/8" O.D. (To fit 5/16" I.D. Gas Hose)  
 Inlet connection : 1/4" O.D. (To fit 3/16" I.D. Gas Hose) **A604**  
 Outlet connections : 1/4" O.D. (To fit 3/16" I.D. Gas Hose)



**without PRV**

Manifold Material : Brass  
 Mounting Bracket : Separate  
 Inlet Connection : 3/8" O.D. (To fit 5/16" I.D. Gas Hose) **A609**  
 Outlet Connections : 3/8" O.D. (To fit 5/16" I.D. Gas Hose)  
 Inlet connection : 1/4" O.D. (To fit 3/16" I.D. Gas Hose) **A610**  
 Outlet connections 1/4" O.D. (To fit 3/16" I.D. Gas Hose)

### 4 Way Gas Distributor



**with 60 PSI PRV**

Manifold Material : Brass  
 Mounting Bracket : Separate  
 Inlet Connection : 3/8" O.D. (To fit 5/16" I.D. Gas Hose) **A605**  
 Outlet Connections : 3/8" O.D. (To fit 5/16" I.D. Gas Hose)  
 Inlet connection : 1/4" O.D. (To fit 3/16" I.D. Gas Hose) **A606**  
 Outlet connections : 1/4" O.D. (To fit 3/16" I.D. Gas Hose)



**without PRV**

Manifold Material : Brass  
 Mounting Bracket : Separate  
 Inlet Connection : 3/8" O.D. (To fit 5/16" I.D. Gas Hose) **A611**  
 Outlet Connections : 3/8" O.D. (To fit 5/16" I.D. Gas Hose)  
 Inlet connection : 1/4" O.D. (To fit 3/16" I.D. Gas Hose) **A612**  
 Outlet connections 1/4" O.D. (To fit 3/16" I.D. Gas Hose)

## 2 Way Gas Distributor without PRV

Manifold Material : Aluminium

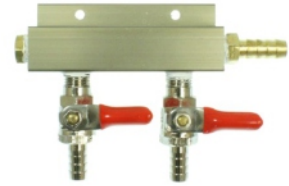
Mounting Bracket : Integrated

Inlet Connection : 3/8" O.D. (To fit 5/16" I.D. Gas Hose) **A613**

Outlet Connections : 3/8" O.D. (To fit 5/16" I.D. Gas Hose)

Inlet connection : 1/4" O.D. (To fit 3/16" I.D. Gas Hose) **A614**

Outlet connections : 1/4" O.D. (To fit 3/16" I.D. Gas Hose)



## 3 Way Gas Distributor without PRV

Manifold Material : Aluminium

Mounting Bracket : Integrated

Inlet Connection : 3/8" O.D. (To fit 5/16" I.D. Gas Hose) **A615**

Outlet Connections : 3/8" O.D. (To fit 5/16" I.D. Gas Hose)

Inlet connection : 1/4" O.D. (To fit 3/16" I.D. Gas Hose) **A616**

Outlet connections 1/4" O.D. (To fit 3/16" I.D. Gas Hose)



## 4 Way Gas Distributor without PRV

Manifold Material : Aluminium

Mounting Bracket : Integrated

Inlet Connection : 3/8" O.D. (To fit 5/16" I.D. Gas Hose) **A617**

Outlet Connections : 3/8" O.D. (To fit 5/16" I.D. Gas Hose)

Inlet connection : 1/4" O.D. (To fit 3/16" I.D. Gas Hose) **A618**

Outlet connections : 1/4" O.D. (To fit 3/16" I.D. Gas Hose)



## 5 Way Gas Distributor without PRV

Manifold Material : Aluminium

Mounting Bracket : Integrated

Inlet Connection : 3/8" O.D. (To fit 5/16" I.D. Gas Hose) **A619**

Outlet Connections : 3/8" O.D. (To fit 5/16" I.D. Gas Hose)

Inlet connection : 1/4" O.D. (To fit 3/16" I.D. Gas Hose) **A620**

Outlet connections : 1/4" O.D. (To fit 3/16" I.D. Gas Hose)



## 6 Way Gas Distributor without PRV

Manifold Material : Aluminium

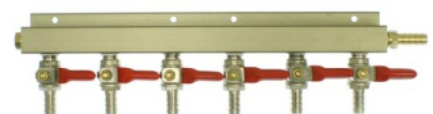
Mounting Bracket : Integrated

Inlet Connection : 3/8" O.D. (To fit 5/16" I.D. Gas Hose) **A621**

Outlet Connections : 3/8" O.D. (To fit 5/16" I.D. Gas Hose)

Inlet connection : 1/4" O.D. (To fit 3/16" I.D. Gas Hose) **A622**

Outlet connections : 1/4" O.D. (To fit 3/16" I.D. Gas Hose)



## Beer Line Fitting & Accessories

### Chrome Plated Brass Tail Piece

- 3/16" ID Bore **A901**
- 1/4" ID Bore **A902**
- 5/16" ID Bore **A903**
- 3/8" ID Bore **A904**
- 1/2" ID Bore **A905**

### Stainless Steel 303 Tail Piece

- 3/16" ID Bore **A906**
- 1/4" ID Bore **A907**
- 5/16" ID Bore **A908**
- 3/8" ID Bore **A909**
- 1/2" ID Bore **A910**

### Chrome Plated Brass Elbow Nipple

- 3/16" ID **A911**
- 1/4" ID **A912**

Material : Brass  
Finish : Chrome plated

### S.S 304 Elbow Nipple

- 3/16" ID **A913**
- 1/4" ID **A914**

Material : Stainless Steel  
Finish : Polished Steel

### Brass Fitting 1/4" Thread x 5/16" Barb A915

Barb : 5/16"  
Thread : 1/4"  
Material : Brass

### Keg Coupler Elbow 90° Angle

Standard beer connection thread 7/8"-14 (5/8" BSP)

Material : SS 304 Finish : SS Polished  
Material : Brass Finish : Chrome Plated

**A916**

**A917**

### Draft Beer Nitrogen Regulator to CO2 Tank Adapter A918

Quickly converts a Nitrogen regulator into a CO2.  
Material : Brass

### Draft Beer CO2 Regulator to Nitrogen Tank Adapter A919

Quickly converts a CO2 regulator into a Nitrogen  
Material : Brass



## Square Brass Cold Block

Fits 7/8" shank (Glycol Line Cold kit component)  
Material : Brass

A920



## Tube Sizing Rod

Easily identify tubing I.D.  
Excellent tool for holding splicers and tailpieces  
Tube I.D. Sizes : 3/16", 1/4", 5/16", 3/8"  
Material : Stainless Steel

A921



## Glass Carboy Handle 5 Gallon

For one handed lifting of empty 5 gallon glass carboys  
Lifting Capacity : 5 gallons  
Material : Nickle Plated Steel

A922



## Glass Carboy Handle 6.5 Gallon

For one handed lifting of empty 6.5 gallon glass carboys  
Lifting Capacity : 5 gallons  
Material : Nickle Plated Steel

A923



## 21" Stainless Steel Spoon

Rugged spoon is great for stirring a mash  
Corrugated design prevents bending  
Material : Stainless Steel

A924



## S.S. Mash Paddle

Without holes  
With holes  
Material : SS 304  
Total Length : 30"

A925  
A926



## Faucet & Hex Nut Wrench with Red Vinyl Grip

Finish : Chrome Plated  
Material : Fully Hardened Steel

A927



## Keg Coupler Check Ball Lifter

Save time while cleaning your draft beer system

A928



Insertion of this device into the bottom of the coupler probe lifts the check ball, permitting cleaning solution to flow through the coupler when cleaning your system. This saves time by eliminating the need to remove the coupler while cleaning the system.

## Tap Handles

### Pub Style Handle

12" Long

- Red A801
- Blue A802
- Green A803
- Yellow A804
- Black A805



Polished Brass Finish

- Red A806
- Blue A807
- Green A808
- Yellow A809
- Black A810



Chrome Plated Brass Finish

**Specification :**

Beautiful 12" long pub style handle  
 Made of brass and wood  
 Deco Painted finish on wood, providing resistance to water  
 Thread 3/8 16 UNC

### Mini Pub Style Handle

9" Long

- Red A811
- Blue A812
- Green A813
- Yellow A814
- Black A815



Polished Brass Finish

- Red A816
- Blue A817
- Green A818
- Yellow A819
- Black A820



Chrome Plated Brass Finish

**Specification :**

Beautiful 9" long pub style handle  
 Made of brass and wood  
 Deco Painted finish on wood, providing resistance to water  
 Thread : 3/8 16 UNC

### Chrome Plated Brass Beer Faucet Knob



A825

**Specification :**

Material: Extruded brass  
 Finish : Chrome plated  
 Thread : 3/8 16 UNC

### Standard US Faucet Plastic Knob



A830

**Specification :**

Thread: 3/8 16 UNC

### Handle Extension



A832  
Length : 1"



A833  
Length : 2"

**Specification :**

Material: Extruded brass  
 Finish: Chrome plated  
 Thread: 3/8 16 UNC

## Coffee Equipment

### Coffee Tamper



A950

**Specification :**

Base : Flat SS 303

Handle : Aluminium Powder Coated

Available in Diameter : 47-58 mm

Handle available in different colours

Diameter of base as per the requirement

### Counter Top Pitcher Rinsers



A951

The Countertop model is an easy solution to those that already have a set-up and aren't able to put a rinser in their counter.  
Dimensions : 6" W x 6 3/4" D x 5 1/8" H with a pan height of 2 5/8"



Approved Product

# PANGEA

---

## EQUIPMENTS

### BEE GEE ENTERPRISES



G.T. Road, Maqsudan,  
Jalandhar, PB. 144008  
INDIA



Unit 1, 3 Housden Street,  
Broadmeadows VIC 3047,  
Australia



+61 473 0100 78  
+91 181 2671 227  
+91 981 5330 882



[info@pangeaequipments.com](mailto:info@pangeaequipments.com)  
[www.pangeaequipments.com](http://www.pangeaequipments.com)

